

Rainbow Rural



MARCH 2024

SIMON'S INSIGHTS.....



Hello everyone,

Spring has arrived here on the farm. Hedgerows are blossoming, daffodils are in bloom and we have new born lambs!

It's been busy for the last few weeks with the lambs, as of typing this we have 7 altogether now. All the mothers have done an excellent job taking care of their lambs which is comforting. It's wonderful seeing the lambs being full of energy and curiosity, most days you can see them playing together or napping in the field together.

Hopefully all will keep going smoothly as they days brighten up and become warmer.

Until next time.....

SIMON

UPCOMING DIARY DATES



RAINBOW RURAL OPEN DAY

We're holding our annual open day on Sunday the 21st of April
All are welcome

See the Lambs - look around our wonderful care farm-

Visit our "MADE BY US" table

Enjoy a drink and a piece of cake from our tea room

For more information contact farm@rainbowrural.co.uk

DUNMOW ANNUAL SOAP BOX RACE

The soap box race is held on and around Dunmow High Street
this year it will be on Sunday the 5th of May

For more information visit greatdunmowsoapboxrace.co.uk

Would you like to help out at the soapbox race?

Rainbow Rural always help with the marshalling and collecting, you can
come along and join us as a volunteer, we would love to have you.

There are perks to be had, free admission and perhaps some lunch

To join our support team e mail farm@rainbowrural.co.uk

WE WOULD LIKE TO PUT IN A VERY SPECIAL THANK YOU TO THOMAS MORE CATHOLIC PRIMARY SCHOOL FOR THEIR VERY GENEROUS DONATION TO OUR FUNDS

Last year the school in Saffron Walden held a non uniform day with a farming theme. The festival day was organised by the infant department. The children came dressed up as farmers and there was a tractor on site for the children to enjoy, they had face painting, apple bobbing, pin the tail on the cow, welly wanging and a team tug of war.

It sounds as though they had a fantastic time and all funds raised on the day were donated to Rainbow Rural because as a care farm we fitted into the farming theme of their special day.

MANY THANKS FOR YOUR VERY THOUGHTFUL GIFT

OUR



SHOP

RAINBOW RURAL

**MOST OF THE THINGS FOR SALE HERE HAVE BEEN MADE BY AND WITH
OUR CLIENTS**

**IF YOU WOULD LIKE TO BUY ANY OF OUR LOVELY CRAFTS PLEASE
E MAIL julie@rainbowrural.co.uk**

**We've added to our lovely
range of greetings cards, we
still have some of the lino print
ones for sale**



**We're making these nature
inspired ones as well**



**They're £10.00 for a pack of 5 assorted
designs**

**They're great if you would like to have
a stock of cards ready for your
upcoming occasions we can send them
out to you as well for a small fee!!**

**Would you like a bird box in
your garden?**



£6

Or a hedgehog house?



**Kindly made and donated by a
volunteer**

£25

No boot room or porch is complete without a boot puller.

We have 2 sizes
(for little boots and big boots!)
They come in random colours



£5

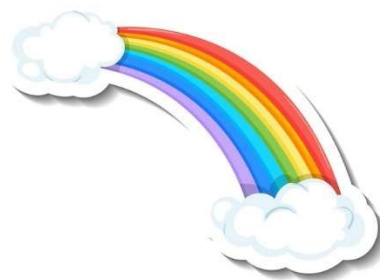
What about this amazing log store?



This has been made completely out of reclaimed wood

£50

Sadly it doesn't come complete with logs, you would have to cut your own!



**PLEASE
REMEMBER**

THE STOCK IN OUR SHOP HAS
BEEN MADE MOSTLY BY OUR
CLIENTS

WE ASSIST THEM HAND OVER
HAND TEACHING
WOODWORKING AND CRAFT
SKILLS

ALL OF THE MONEY FROM THE
SALE OF THESE ITEMS IS
CHANNELLED STRAIGHT BACK
TO THE WORKSHOP AND
CRAFTS DEPARTMENTS OF
RAINBOW RURAL

WE CAN POST THE CARDS OUT
TO YOU BUT WE WOULD NEED
YOU TO COLLECT THE LARGER
ITEMS

RAINBOW RURAL PHOTO JOURNAL

We've been very busy again taking pictures in and around the farm. We hope you enjoy this photo journal that we've put together for you.

It's that time of year, the lambs are arriving, we have 7 so far, two sets of twins, and more on the way



Magpie with her twin lambs
Both are boys



This is Lilly, both of her lambs are girls



Sally checking out some interesting holes on our neighbours' footpath 😬

When I can I go for a lovely walk along the footpaths through and around our farm. It's interesting seeing our neighbours' farms and wildlife too, and my dog Sally enjoys lots of new sniffs! We always walk our dogs on a lead, as it keeps the wildlife safe and our farm sheep too, and I always thank our neighbouring dog walkers who follow the rules too.



A lovely sight after so much 🌧️ rain? Can you see this lovely 🐝 bee drying and warming up, just before it took flight and found some much needed nectar.



The steps in clay pit wood are all repaired



Rainbow Rural and Sallet's farm support our wildlife and conservation all through the seasons. This photo I took recently near our hand clearing of areas of hedgerow and field buffer zone. This piece of wood shows where animals have chewed and eaten it. Sometimes you can also see where the deer have thrashed the hedge to help prepare their antlers for Winter rutting 🙄

WE HOPE YOU'VE ENJOYED LOOKING AT OUR PHOTO JOURNAL WE'VE CERTAINLY ENJOYED TAKING THE PICTURES.

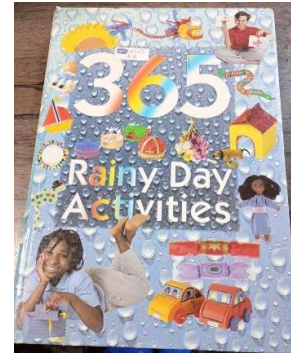
IF YOU HAVE ANY PICTURES YOU WOULD LIKE US TO INCLUDE THAT YOU'VE TAKEN ON YOUR VISITS TO US WE'D BE VERY HAPPY TO PUBLISH THEM.

SEND THEM TO julie@rainbowrural.co.uk

IF THEY HAVE PEOPLE IN THEM DON'T FORGET TO ASK THEIR PERMISSION



We have been tested with so much rain this winter! It's so important to dress for the weather, and Winter brings 🧊 and ☁️. Rainbow Rural provides an information sheet when booking to explain what is needed. Personally I am looking forward to drier weather and my walking boots!!



This has proved a very necessary book I purchased from a charity. We have certainly needed more under cover activities! It's lovely finding so many things to do and make, Rainbow Rural hopes to make a few extra things to sell to our visitors to help our funding. 😊 See our MADE BY US table at our open day on Sunday the 21st of April



INDEPENDENT DAYS AT RAINBOW RURAL

A 10 WEEK COURSE FOR VULNERABLE PEOPLE WHO LIKE TO WORK WITHOUT A CARER

**WE HAVE A NEW 10 WEEK COURSE WHICH STARTS ON THE
12th of APRIL**

**WE STILL HAVE SOME PLACES LEFT, YOU CAN JOIN US FOR THE COURSE,
WE WOULD LOVE TO WELCOME YOU.**

Week 1-12th April

Week 2-19th April

Week 3-26th April

Week 4-3rd May

Week 5-10th May

Week 6-17th May

Week 7-24th May

Week 8-31st May

Week 9-7th June

Week 10-14th June

THERE ARE 3 PLACES AVAILABLE

If you would like to join this group phone Simon for information

07873 232055

If you would like to come and join Farm Independent Days, we will invite you to meet us on a Friday to look around our Care Farm to make sure this will be suitable.

Email bookings@rainbowrural.co.uk for more information and to book a date for your visit

Additional questions can be answered by emailing simon@rainbowrural.co.uk or phone us on 07873 232055

(you may need to leave a message we might be instructing)

WE LOOK FORWARD TO MEETING YOU ALL

THE “CRAFTS ON THE FARM” WORKSHOP GROUP ARE HAVING A GREAT TIME.

We're currently making Tunisian Crochet infinity scarves
We meet alternate Sundays in the classroom



If you would like to come and join our group we have 4 places available.

The first class will cost £45 which will include all the materials you need to make this lovely scarf.

Then all following classes cost just £15 to continue with making, chatting, drinking tea or coffee and generally having a good time

Please contact julie@rainbowrural.co.uk for more information



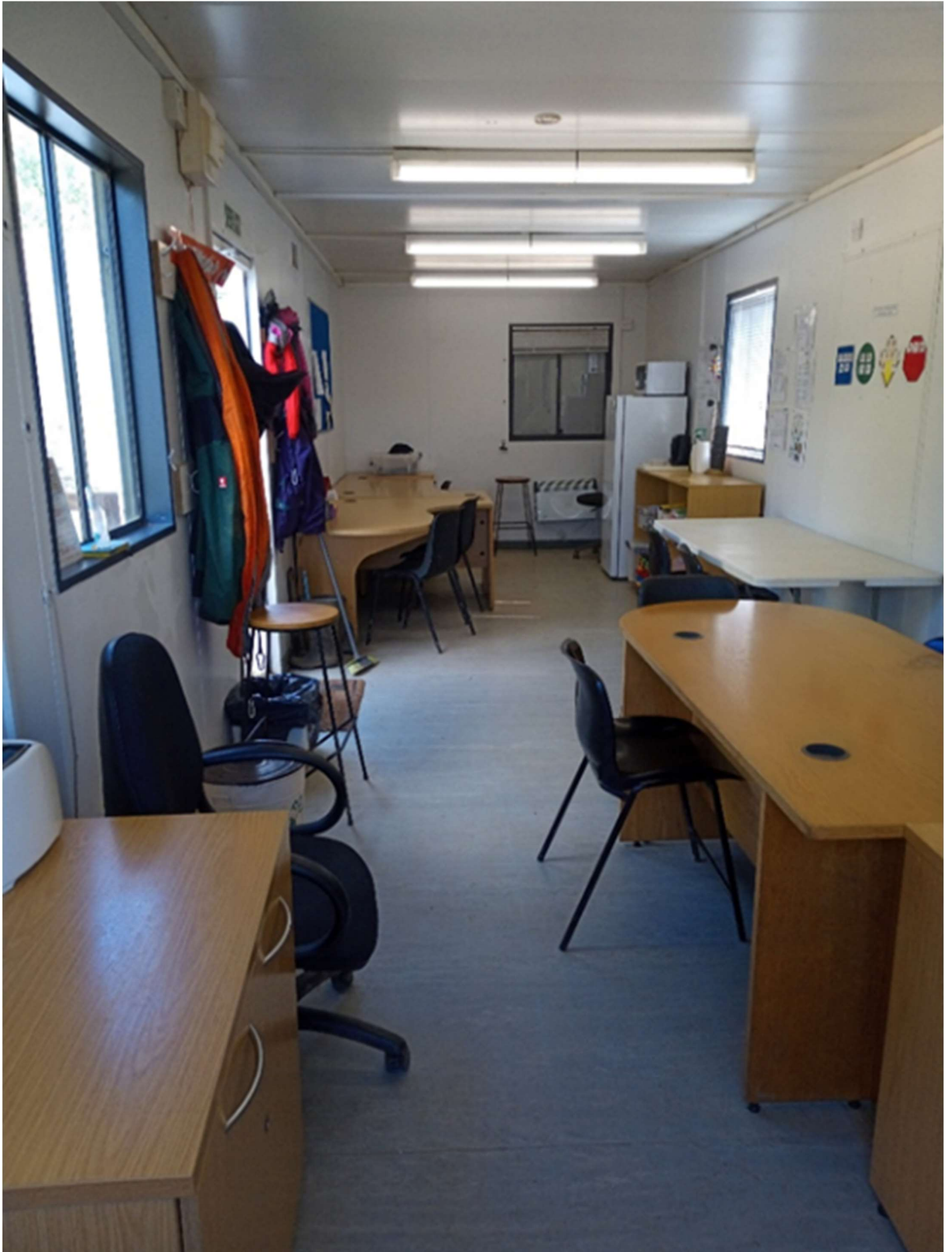
We're enjoying our
crochet classes!



**DO YOU HAVE A CRAFT THAT YOU WOULD LIKE TO
TEACH?**

You can rent our beautiful classroom to run your lessons
just e mail us for further information bookings@rainbowrural.co.uk

OUR CLASSROOM IS A LOVELY CLEAN SPACE THAT CAN BE USED FOR ALL MANNER OF CRAFT CLASSES, PRESENTATIONS OR GROUP MEETINGS.





A BIG THANK YOU FROM US

We would like to thank everyone who is helping us in their own way

EVERYONE WHO HAS MADE A PAY PAL DONATION,

OR DIRECTLY TO US, OR VIA OUR WEB SITE

THANK YOU FOR CONTINUED SUPPORT FROM LOCAL BUSINESS

727 TOOL HIRE

ANGLIA LAND DRAINAGE

Mc CARTHY STONE

AGGREG8

MALONIES VETERINARY

DUNMOW ROUND TABLE

TESCO & FAYRE SHARE

HORNSEA ANIMAL FEED

NATIONAL LOTTERY

FELSTED SCHOOL

ST THOMAS MORE CATHOLIC PRIMARY SCHOOL

DUNMOW FENCING

DUNMOW CHIP SHOP

MATT CROUCHMAN PLUMBING

LITTLE KAROO FARM

SORRY IF YOU'VE BEEN MISSED OFF OF OUR LIST GIVE US A NUDGE

AND WE'LL REMEMBER YOU NEXT TIME

If our newsletter has been forwarded to you and you would like

to keep up with us by joining our mailing list drop us a line

bookings@rainbowrural.co.uk